

# ST JAMES'S LONDON



# Rex House

REGENT STREET, ST JAMES'S

**High Quality 5th Floor Offices**

**8,952 sq ft (832 sq m)**

**TO LET**



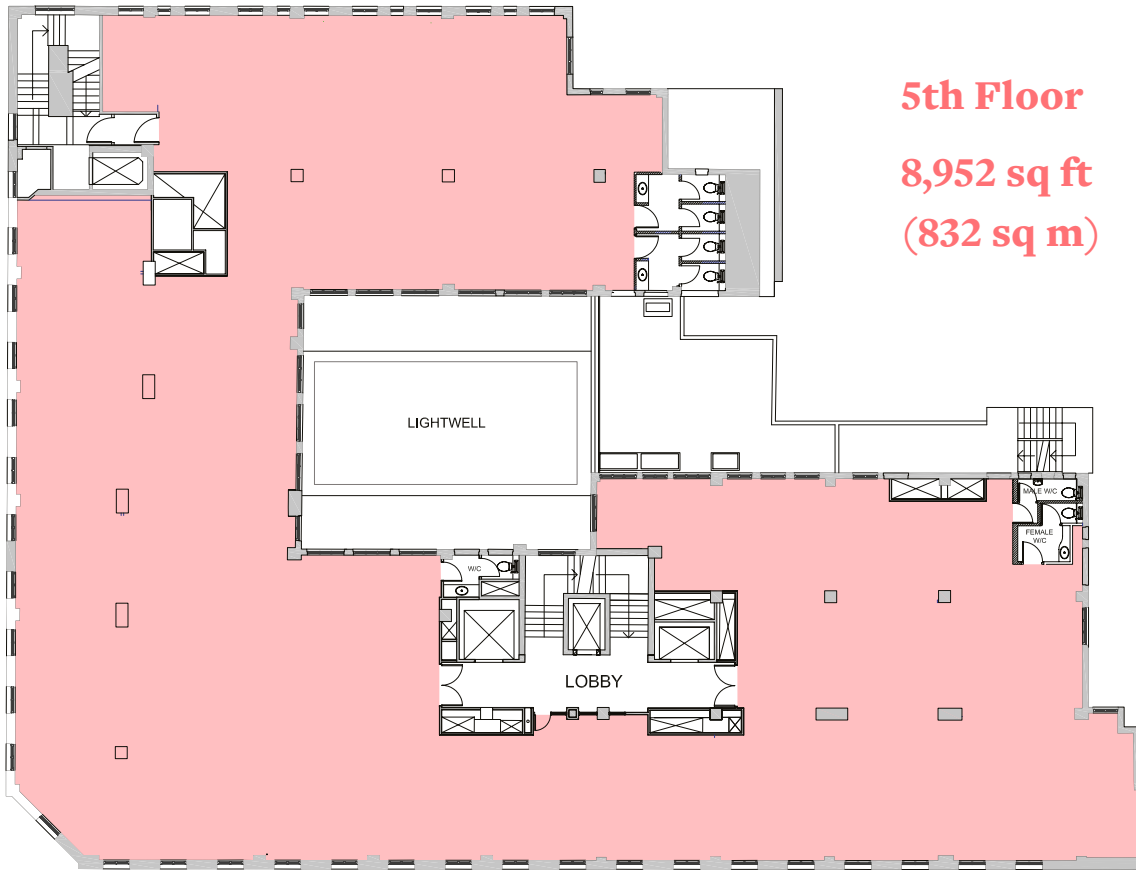
## Description

Rex House provides a high quality working environment, situated in a central and accessible location.

The ground floor reception area has been remodelled by Birgit Klein and now creates a welcoming entrance to this attractive building.

The available accommodation is on the 5th floor providing efficient and bright air conditioned space.





**5th Floor**  
**8,952 sq ft**  
**(832 sq m)**

## Summary Specification

- Fully Fitted Offices
- Raised floors
- Metal tiled ceiling
- 3 passenger lifts
- Separate goods lift
- Demised male and female WCs
- Chilled ceiling comfort cooling
- Two kitchenette's
- Impressive reception
- Commissionaire



# Situated in the very heart of exclusive St James's







## Location

Rex House is located on the east side of Regent Street St James's, between its junctions with Carlton Street and Charles II Street, just south of Piccadilly Circus.

Transport connections are excellent, Green Park (Jubilee, Piccadilly & Victoria Lines), Piccadilly Circus (Piccadilly & Bakerloo Lines), Leicester Square (Piccadilly & Northern Lines) and Charing Cross underground (Bakerloo & Northern Lines) are all within close proximity. Mainline train services are also available at Charing Cross.

## Underground Times

From Piccadilly Circus to:	mins
Waterloo ●	4 mins
Victoria ●●	5 mins
Bond Street ●●	6 mins
King's Cross St Pancras ●	7 mins
Liverpool Street ●●	15 mins

Source: www.tfl.gov.uk

## Contact

Viewing by prior appointment with the joint sole agents.

For further information, please visit:  
[www.rexhouse.co.uk](http://www.rexhouse.co.uk)



The Crown Estate is bound by the provisions of the Freedom of Information Act 2000 ("FOIA"). Third parties acknowledge that The Crown Estate may be required to disclose information they have supplied in response to a request for information under the FOIA. Please therefore clearly identify any information supplied to The Crown Estate which is considered to be confidential or commercially sensitive, with reasons and the harm of disclosure. Where The Crown Estate believes that information ought not to be disclosed for the reasons given, it will take all possible reasonable steps to avoid its disclosure and would, in any event, where practicable, inform the third party before doing so. However, The Crown Estate is ultimately solely responsible for determining whether any information supplied to it must be disclosed under the FOIA. October 2012. Important Notice: 1. Particulars: These particulars are not an offer or contract, nor part of one. You should not rely on statements by Knight Frank LLP nor DE&J Levy LLP in the particulars or by word of mouth or in writing ("information") as being factually accurate about the property, its condition or its value. Neither Knight Frank LLP nor DE&J Levy LLP nor any joint agent has any authority to make any representations about the property, and accordingly any information given is entirely without responsibility on the part of the agents, seller(s) or lessor(s). 2. Photos etc: The photographs show only certain parts of the property as they appeared at the time they were taken. Areas, measurements and distances given are approximate only. 3. Regulations etc: Any reference to alterations to, or use of, any part of the property does not mean that any necessary planning, building regulations or other consent has been obtained. A buyer or lessee must find out by inspection or in other ways that these matters have been properly dealt with and that all information is correct. 4. VAT: The VAT position relating to the property may change without notice. Knight Frank LLP is a limited liability partnership registered in England with registered number OC305934. Our registered office is 55 Baker Street, London W1U 8AN, where you may look at a list of members' names. DE & J Levy LLP is registered in England and Wales as a Limited Liability Partnership, Registered No. OC336420. Registered Office: Dukes Court, 32 Duke Street St James's, London SW1Y 6DF. Created by tlgd.co.uk. December 2016



**Simon Tann:** 020 7747 0141  
[simon.tann@levyllp.co.uk](mailto:simon.tann@levyllp.co.uk)

**James Elliott:** 020 7747 0141  
[james.elliott@levyllp.co.uk](mailto:james.elliott@levyllp.co.uk)



**Ian McCarter:** 020 7861 1506  
[ian.mccarter@knightfrank.com](mailto:ian.mccarter@knightfrank.com)

**Ben Lewis:** 020 7861 1197  
[ben.lewis@knightfrank.com](mailto:ben.lewis@knightfrank.com)